



METROPOLITAN

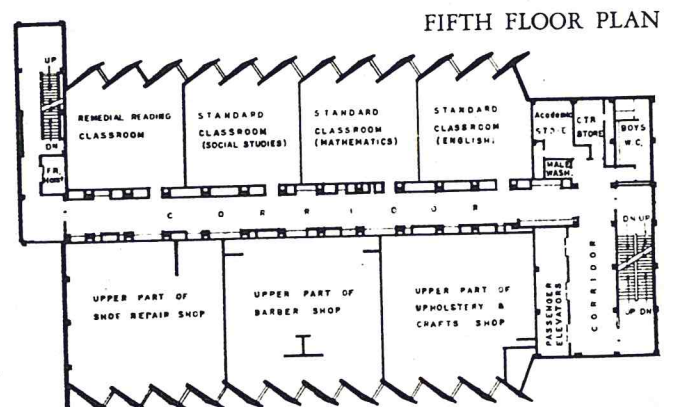
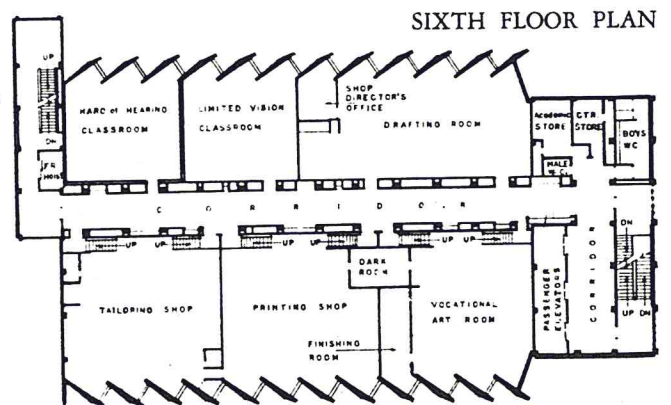
## PARKWAY VOCATIONAL SCHOOL

ARCHITECTS & ENGINEERS — TORONTO BOARD OF EDUCATION • CHIEF ARCHITECT — F. C. ETHERINGTON • CHIEF ENGINEER — H. G. FACEY • CONTROLLER OF BUILDING AND PLANT — R. H. SELF

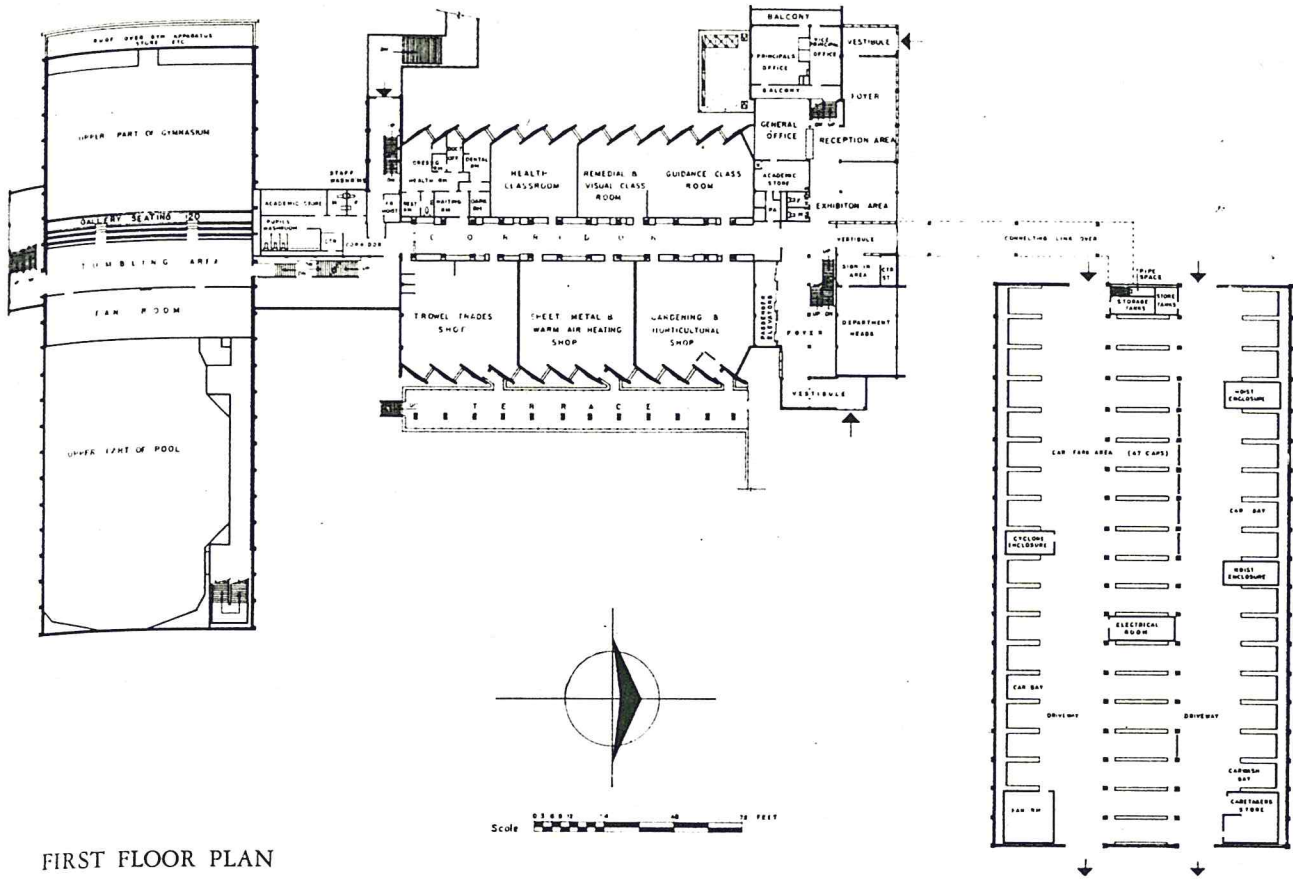
Construction of the new school was undertaken as part of the general program to improve technical and vocational schools in Toronto. Location is on a six and a half acre site overlooking the Don Valley. To conserve land on the restricted site the main centre containing the library, administrative offices, and thirty-one classrooms is a six storey block linked, by covered walkways, to units on the north and south. The classroom block is served by three high speed elevators and one freight elevator. A pedestrian bridge provides access to a city park and recreational and athletic facilities which are used by students during school hours.

Construction is of precast concrete T beams for floors, reinforced concrete columns and wall fins, with brick facing panels. Windows in the six storey block are splayed at an angle to the classrooms providing minimum sun glare and maximum northern light.

Total floor area is 182,926 sq. ft and cost, including fees and equipment, is \$24.57 per sq. ft.







FIRST FLOOR PLAN

SECOND FLOOR PLAN

