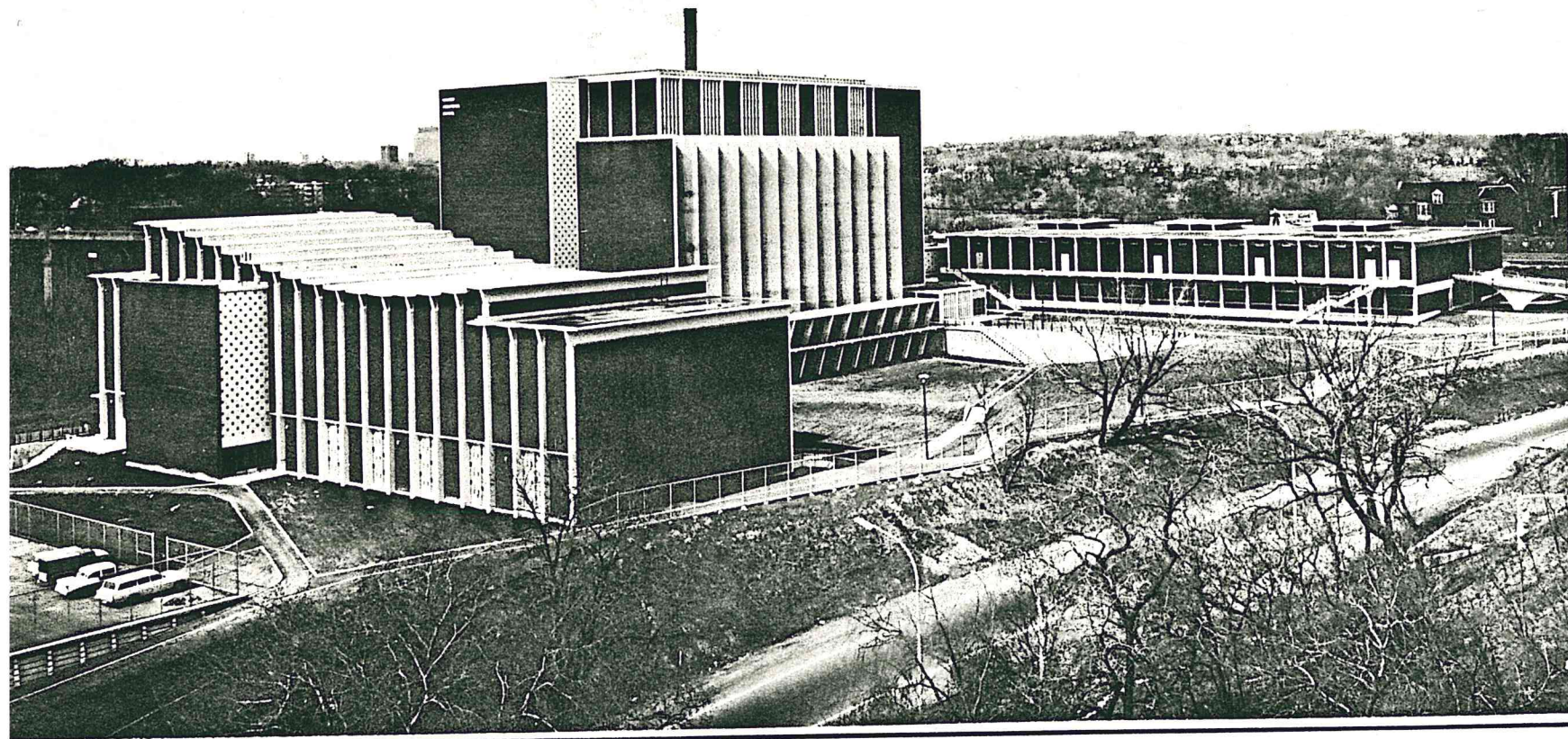
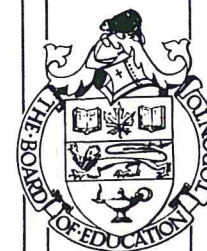


1964

PARKWAY
VOCATIONAL
SCHOOL.



OFFICIAL OPENING — 8 P.M. APRIL 21 1964.
BY THE HON. WILLIAM G. DAVIS, M.P.P., MINISTER OF EDUCATION.



Z. S. PHIMISTER, B. A., B. Paed., L L. D.

DIRECTOR OF EDUCATION

R. HARVEY SELF, B.A.Sc., P.Eng.
Comptroller of Buildings & Plant

F. C. ETHERINGTON, M.R.A.I.C.
Chief Architect

G. D. FRITTENBURG, B.Arch., M.R.A.I.C.
Deputy Chief Architect

H. G. FACEY, B.A.Sc., P.Eng.
Chief Engineer

B. H. BOYD, B.A.Sc., P.Eng.
Design Engineer, Mechanical

A. T. ROBINSON, B.A.Sc., P.Eng.
Design Engineer, Electrical

K. H. HATCH, B.A.Sc., P.Eng.
Design Engineer, Structural

GRAHAM M. GORE, B.A., F.C.I.C.
Superintendent of Secondary Schools

HAROLD B. DEAN, O.B.E., B.A., B.Paed.
Assistant Superintendent of Secondary Schools

A. L. MILLOY, B.A., B.Paed.
Assistant Superintendent of Secondary Schools

JOHN F. MCGIVNEY, B.A., B.Paed.,
Principal of Parkway Vocational School

DELL CONSTRUCTION CO. LTD.
General Contractor

photography - metropolitan photos

brochure - architect's department, building division

TORONTO BOARD OF EDUCATION

PARKWAY VOCATIONAL SCHOOL

In 1961, the Provincial and Federal Governments entered into the Technical and Vocational Agreement which provided for payment of the cost of construction of facilities for vocational education. The construction of a new school was undertaken as part of the general programme to improve technical and vocational schools in the city and, through an agreement which was reached between the Toronto Board of Education and the City Council, the present site was obtained in exchange for the old site of Jarvis Junior Vocational School.

The school is located on the 6½-acre site at Danforth Avenue and Royal Drive, and has a commanding view of the Don Valley.

The main centre block was built six storeys high to conserve land on the restricted site and contains the library, administrative offices and 31 classrooms, which are served by three high-speed elevators and one freight elevator. On the north side of the six-storey block is the unit containing the shops and on the south side is the swimming pool and cafeteria/auditorium unit. Both units are accessible from the main block by covered walkways.

There is also access by means of a pedestrian bridge, to the athletic and recreation facilities operated by the City Parks Department on the south side of Royal Drive, and by an agreement with the Parks Department use of these facilities can be made during school hours.

Plans were prepared by the Board of Education staff and tenders called on April 5, 1962. The contract was awarded and construction commenced immediately after Board approval. The cornerstone was laid on June 5, 1962, and the building occupied by students on September 3, 1963.

Construction of the new school consists of precast concrete T beams for floors, reinforced concrete columns and wall fins and brick facing panels.

Windows in the main six-storey classroom block are splayed at an angle to the room, to provide a minimum of sun heat and glare and a maximum amount of north light.

Interior finishes consist of painted block walls generally and glazed tile walls in the washrooms.

Ceilings are painted concrete in the shops and classrooms, acoustic tile in the offices and corridors. Floors are linoleum in the classrooms, wood in the gymnasium, terrazzo in the corridors and washrooms. The carpentry and occupational shops have wood block floors.

To provide maximum use of space, the auditorium and cafeteria were combined in one room as the need for using these areas simultaneously was improbable. The stepped platforms were designed wide enough to accommodate fold away lunch tables and the chairs are rearranged to provide auditorium or cafeteria seating.

The mechanical plant of this building consists of two pipe forced flow reverse return hot water at a temperature of about 200°F. Ventilation is fan energized supply and exhaust. In addition, there are a number of specialized exhaust systems for sawdust collection, tailoring shop pressing machines, spray booths, welding equipment, automotive and cafeteria cooking fumes. One unique feature of the building is its heating plant, which is located on the roof.

Electrical equipment in the building consists of fluorescent lighting in the instructional areas, an electric fire alarm system, local telephones, public address system and automatic programme and clock system.

A comparative area analysis with a list of the accommodation is attached.

COMPARATIVE AREA ANALYSIS:
(Based on 1/8" scale working drawings, dated February 1962.)

ROOM NAME	AREA (SQUARE FEET)
9 Standard Classrooms (aver. 809)	7,282
1 Business Machines Classroom	804
1 Health Classroom	817
1 Remedial & Visual Classroom	771
1 Hard of Hearing Classroom	811
1 Limited Vision Classroom	802
1 Remedial Reading Classroom	825
1 Food Processing Classroom	808
1 Guidance Classroom	869
1 Warehousing Classroom	1,347
1 Music Room	1,643
1 Trowel Trades Shop	2,155
1 Sheet Metal & Heating Shop	2,131
1 Garden & Horticultural Shop	2,180
1 Electrical Shop	1,638
3 Occupational Training Shops	4,488
1 Upholstery & Craft Shop	1,486
1 Barber Shop	1,512
1 Shoe Repair Shop	1,435
1 Drafting Room	1,617
1 Vocational Art Room	1,742
1 Printing Shop	1,578
1 Tailoring Shop	1,529
1 Motor Maintenance Shop	2,459
1 Body Repair Shop	3,046
1 Motor Mechanics Shop	2,276
1 Machine Shop	1,424
2 Carpentry Shops @ 1587	3,174
1 Painting & Decorating Shop	<u>1,391</u>
	54,040
1 Double Gymnasium	5,629
Library	1,924
Cafetorium (incl. stage)	6,738
Kitchen (incl. serveries)	3,934
Staff Dining Room	722
Staff Room & Washrooms	1,674
Home & School Kitchen	80
Dressing Rooms	<u>1,725</u>
	16,797
Administrative Offices	1,414
Department Heads' Office	585
Health Room (incl. Waiting Room)	579
Dental Room	177
Dark Room	<u>47</u>
	2,802
Pupils' Washrooms	1,315
Storage - Caretakers'	2,475
- Athletic	1,150
- Academic	2,494
Boiler Room (incl. incinerator)	2,246
Mechanical Equipment & Fan Room	3,877
Elevator Machine Room	650
Electrical & Transformer Rooms	1,511
Caretakers' Offices & Lunch Room	<u>838</u>
	16,556
Elevators	4,874
Corridors	35,062
Walls	<u>17,110</u>
	57,046
TOTAL (excl. Pool & car parking-Sq.Ft.)	152,870
Swimming Pool (incl. walls)	11,799
TOTAL (incl. swimming pool)	164,669
Basement car Parking (incl. walls)	18,257
TOTAL AREA OF BUILDING	182,926 sq. ft.
- including swimming pool & car park	760 Pupils
Design Capacity of School	201.14 sq. ft.
Area Per Pupil (excl. pool & car park)	907 sq. ft.

Analysis by Building Division
March 20, 1962.

PARKWAY VOCATIONAL SCHOOL

Costs at February 26, 1964

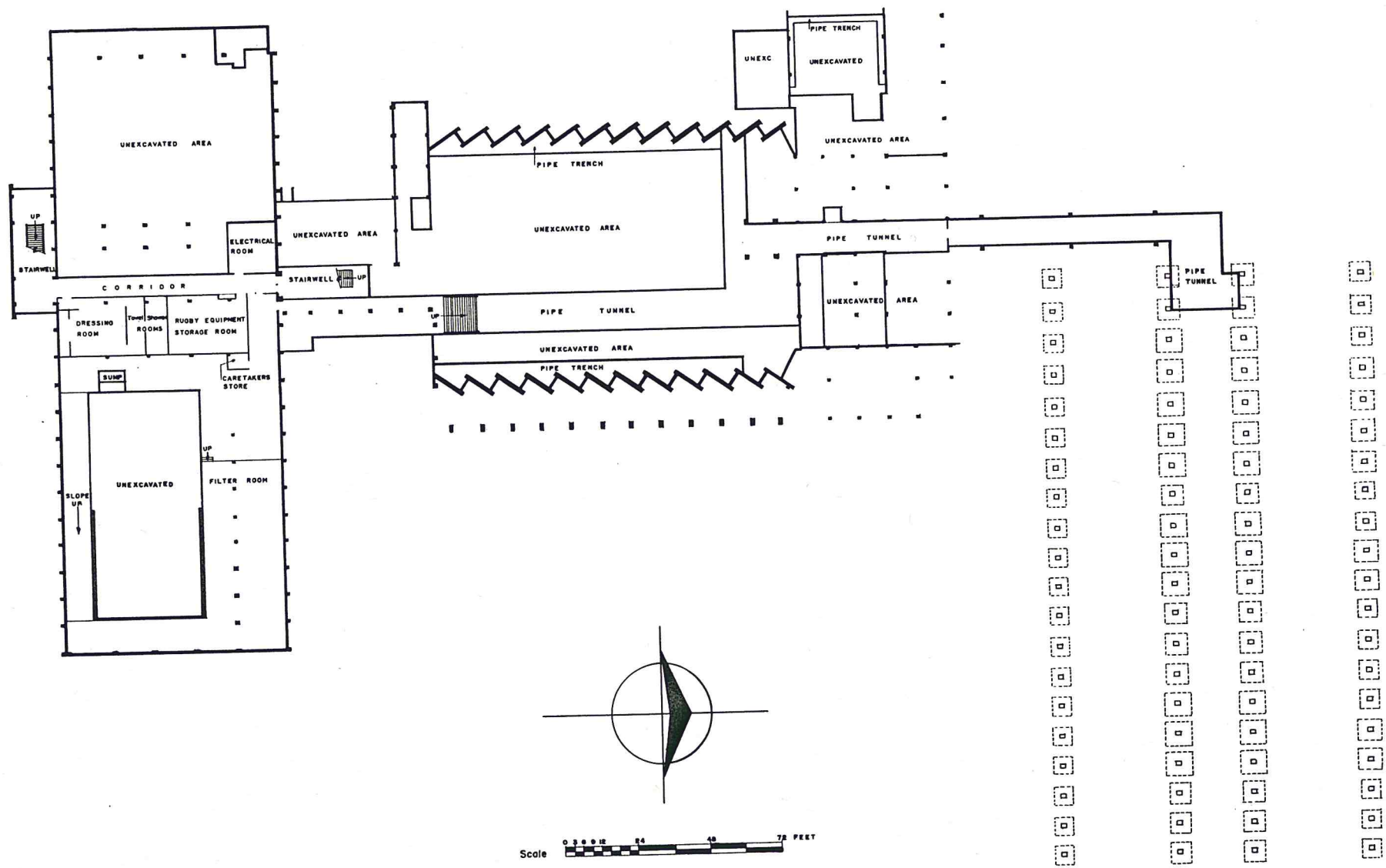
ARCHITECTS: Board of Education Staff

COST ANALYSIS

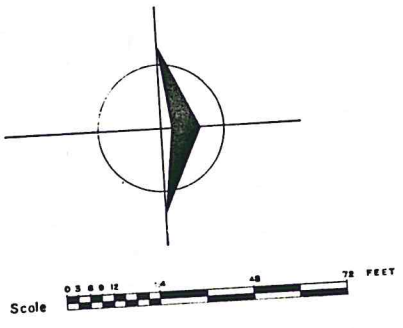
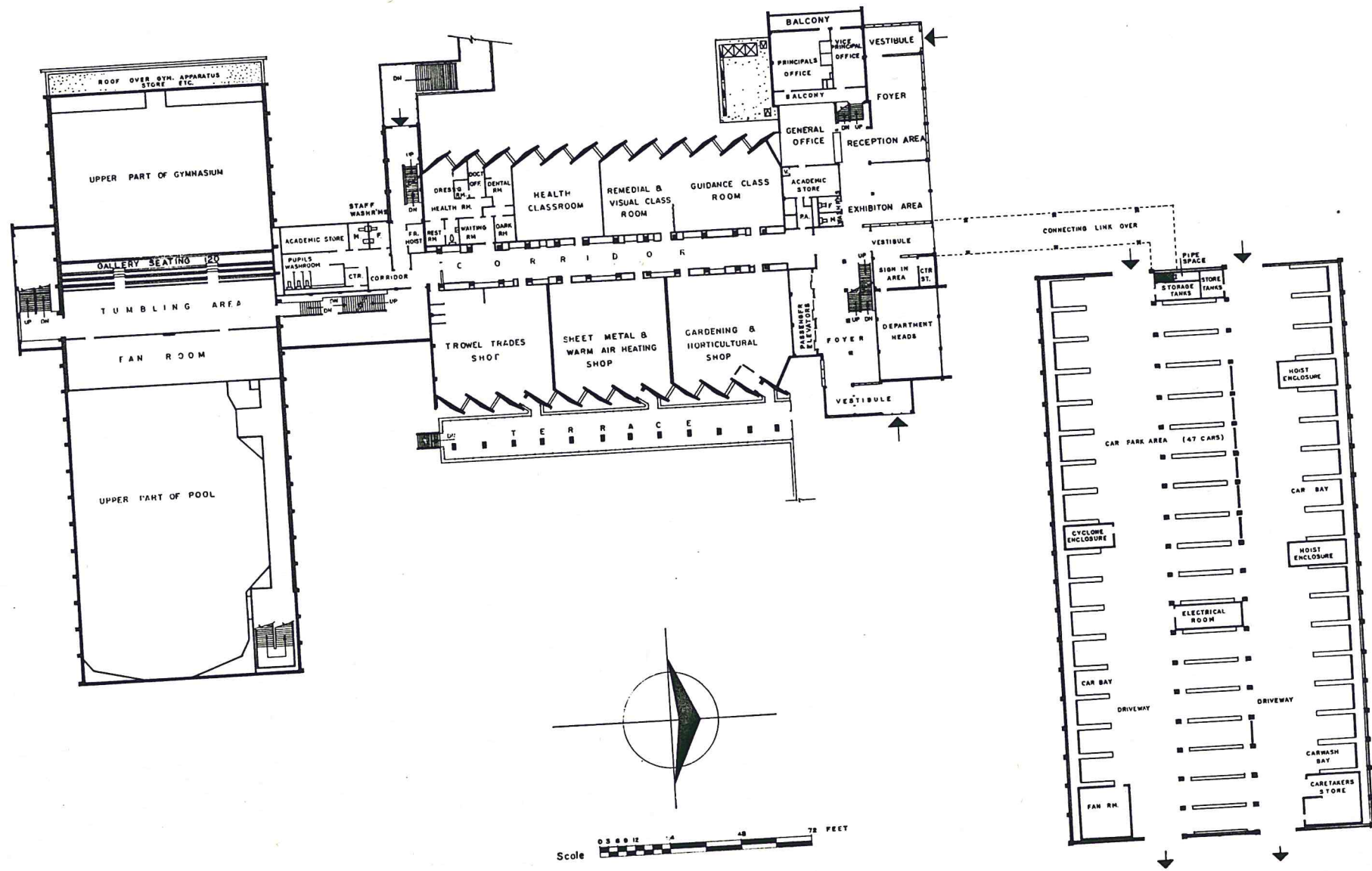
ITEM	COST (Area: 182,926 sq. ft.) (Volume: 2,301,209 Cu.Ft.)	Cost per Sq. Ft.	Cost per Cu.Ft.	Remarks
Building Contract	\$ 2,660,936.15	\$14.55) Includes Yardwork
Mechanical Contract	804,707.53	4.40) Includes swimming pool and car parking.
Electrical Contract	331,556.34	1.81)
Contingency	55,921.89	.30)
Architects Fees @ 5%	143,059.02	.78)
Sales Tax Rebate	cr. 13,325.53	cr. .07) Credit Item
TOTAL (excluding academic equipment)	\$ 3,982,855.40	\$21.77	\$ 1.73	
Academic Equipment	\$ 450,000.00	2.46		
TOTAL (including equipment)	\$ 4,432,855.40	\$ 24.23	\$ 1.93	

Analysis by Building Division

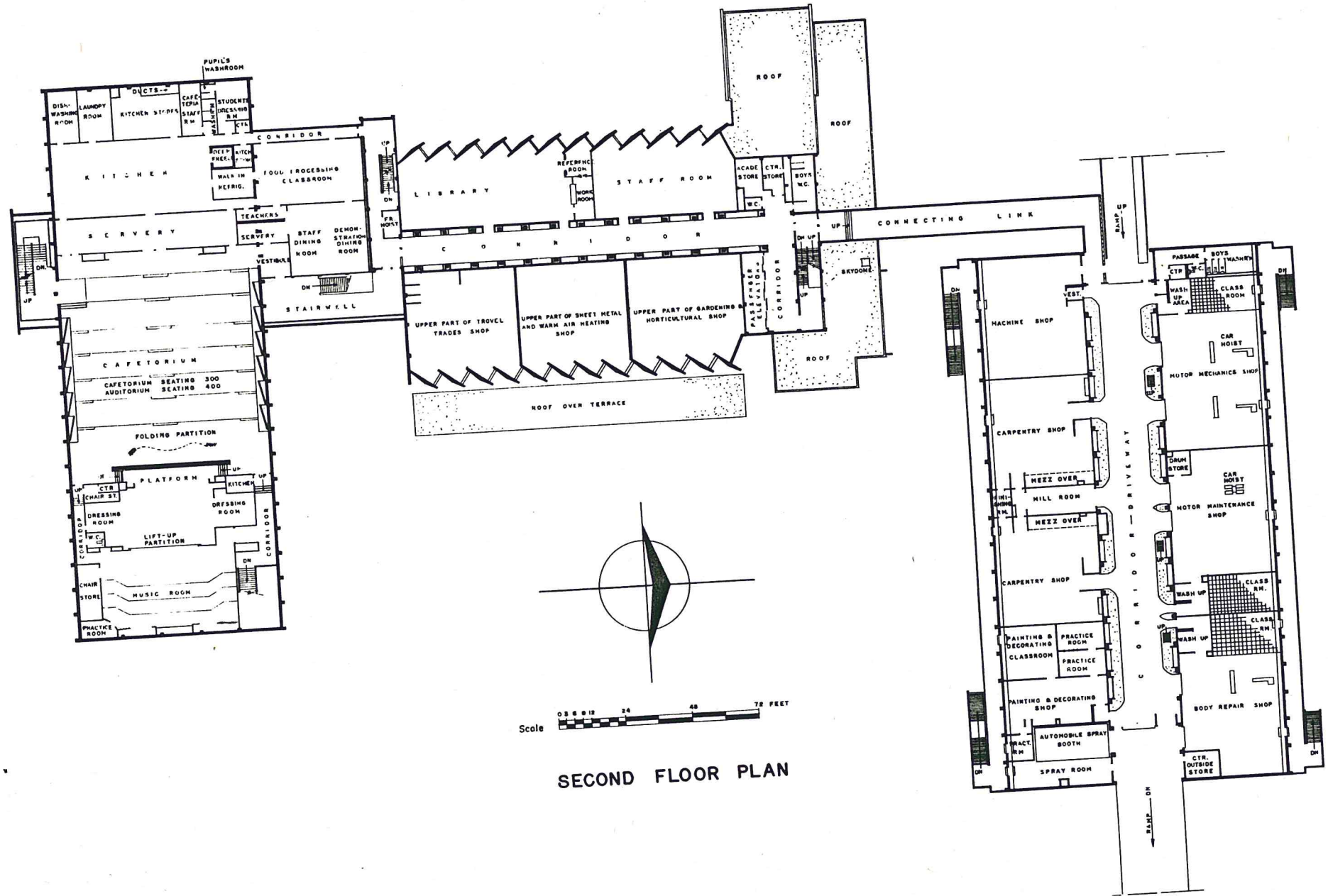
April 14, 1964.



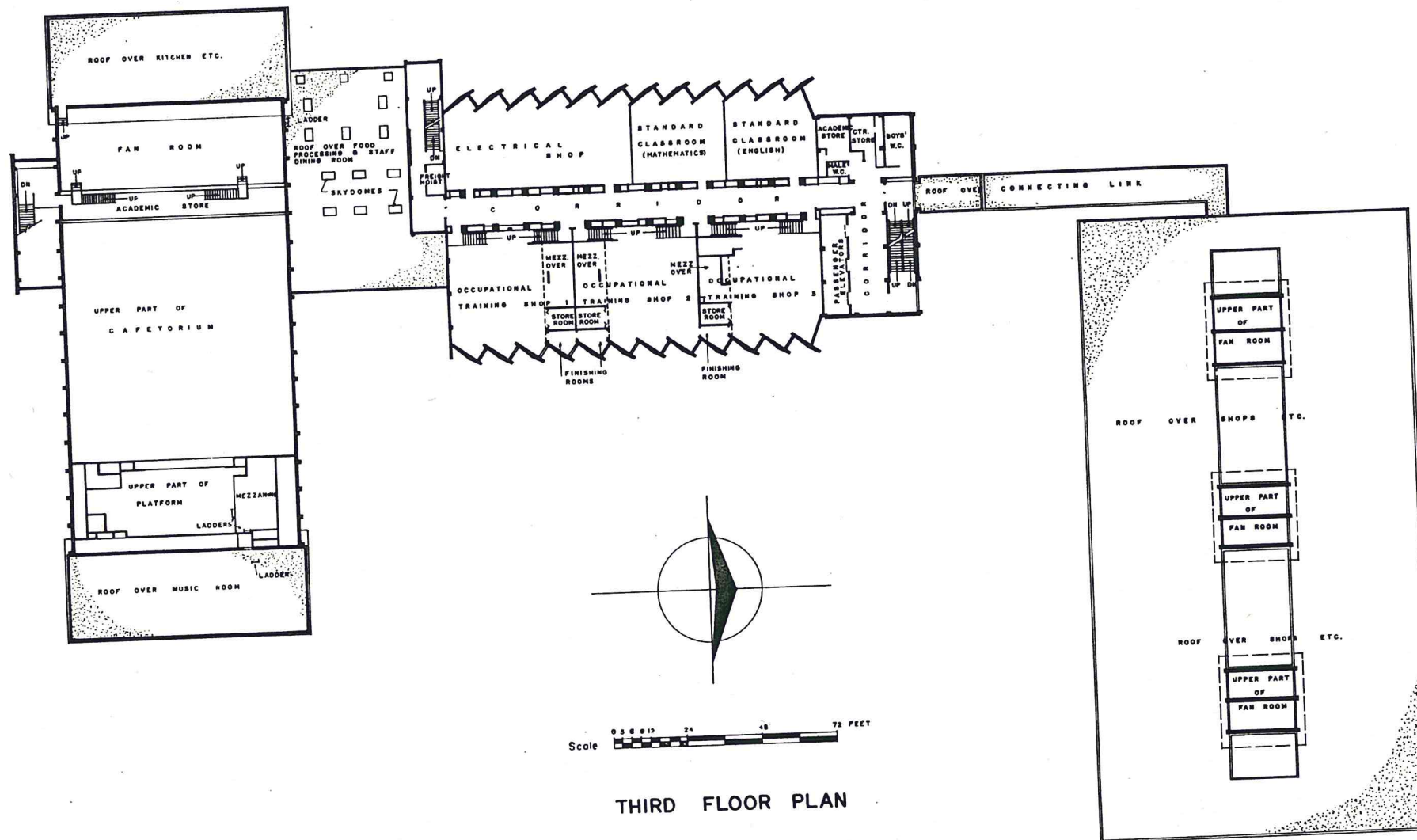
SUB-BASEMENT PLAN



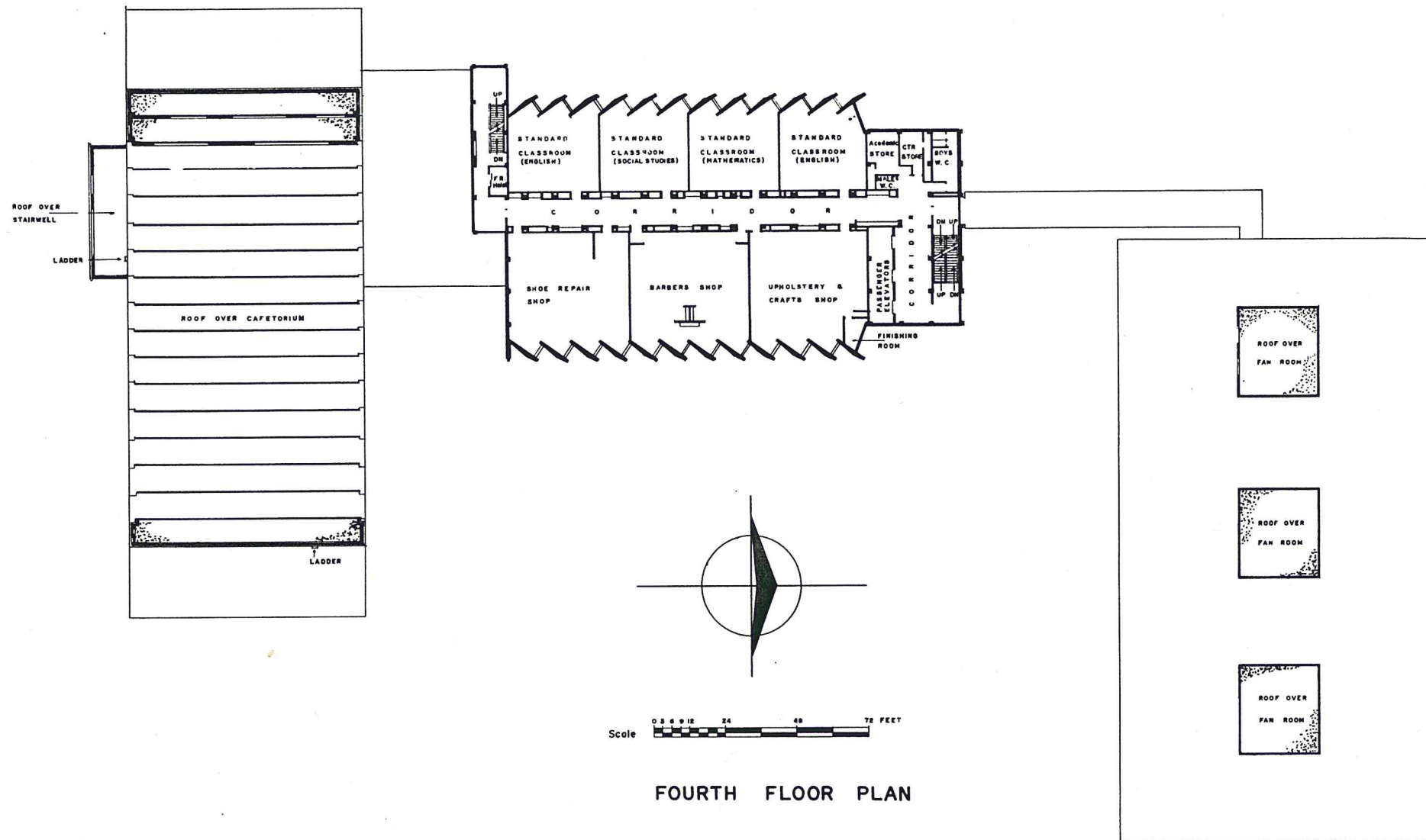
FIRST FLOOR PLAN



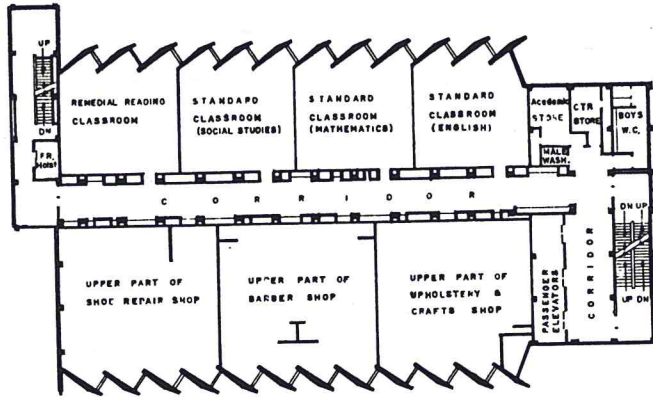
SECOND FLOOR PLAN



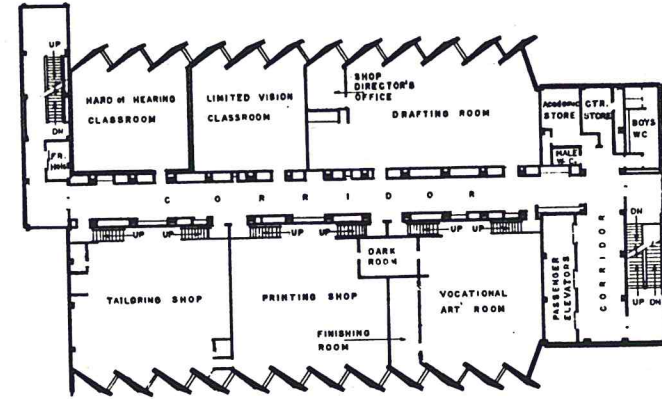
THIRD FLOOR PLAN



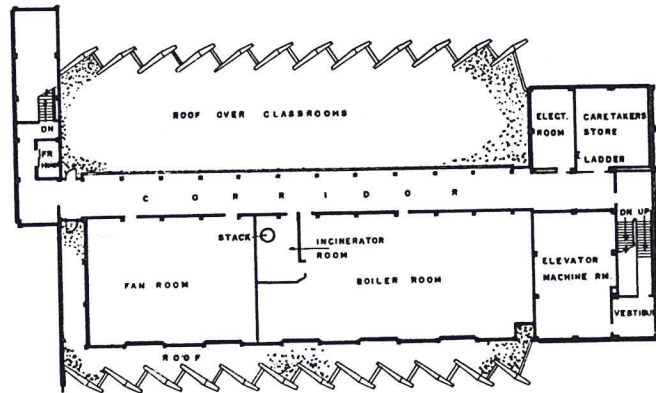
FOURTH FLOOR PLAN



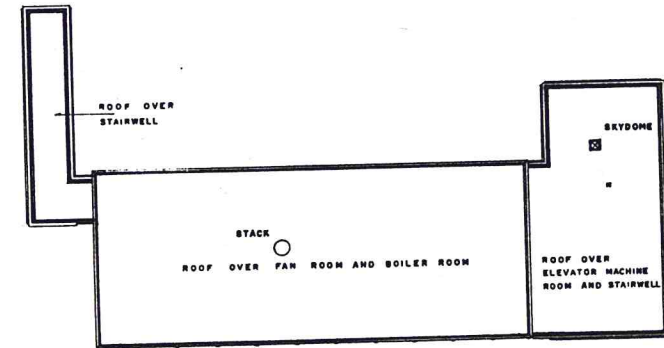
FIFTH FLOOR PLAN



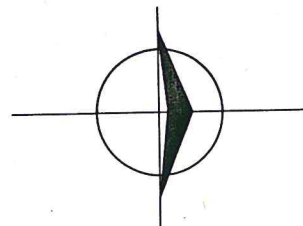
SIXTH FLOOR PLAN

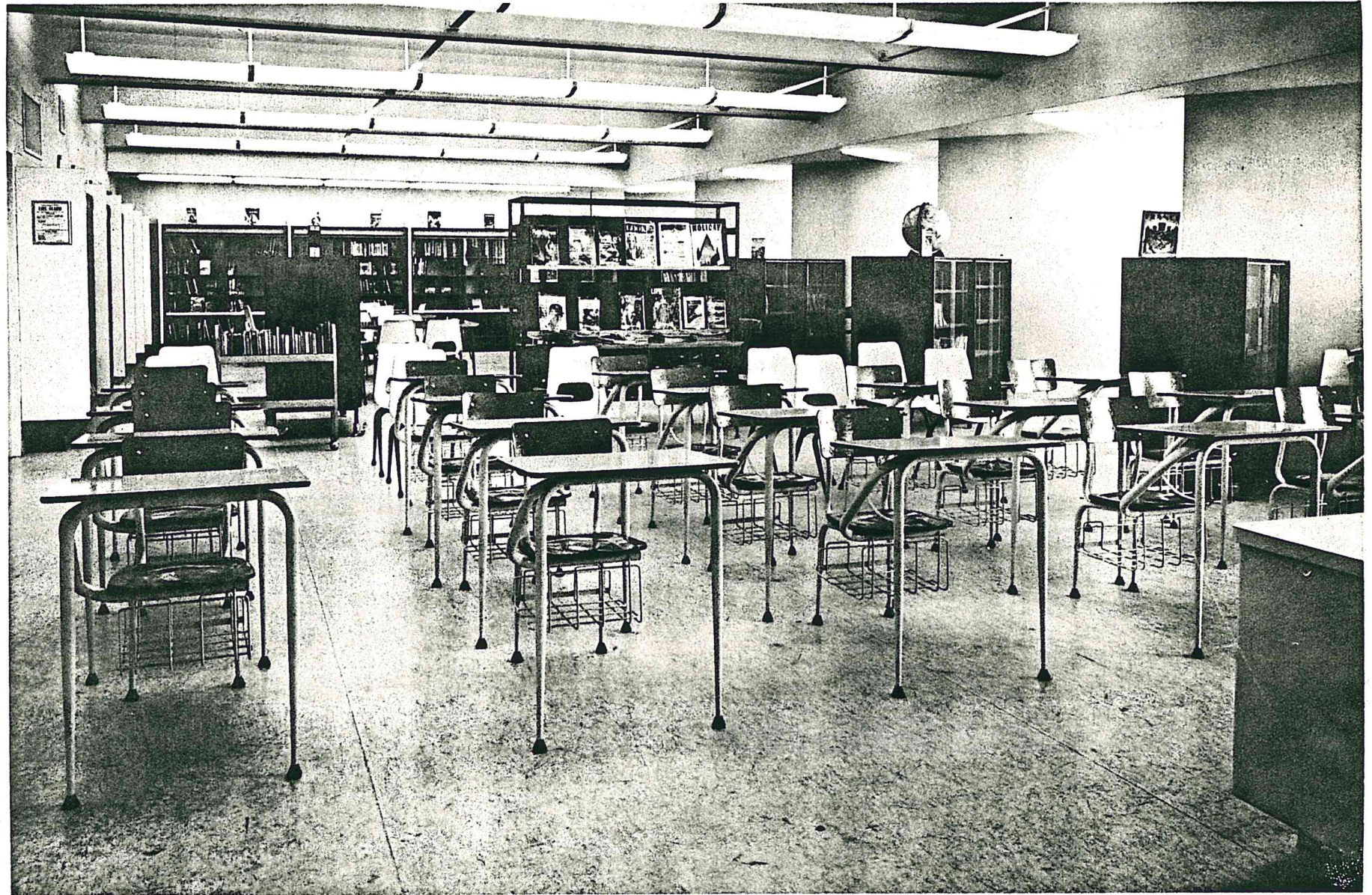


SEVENTH FLOOR PLAN

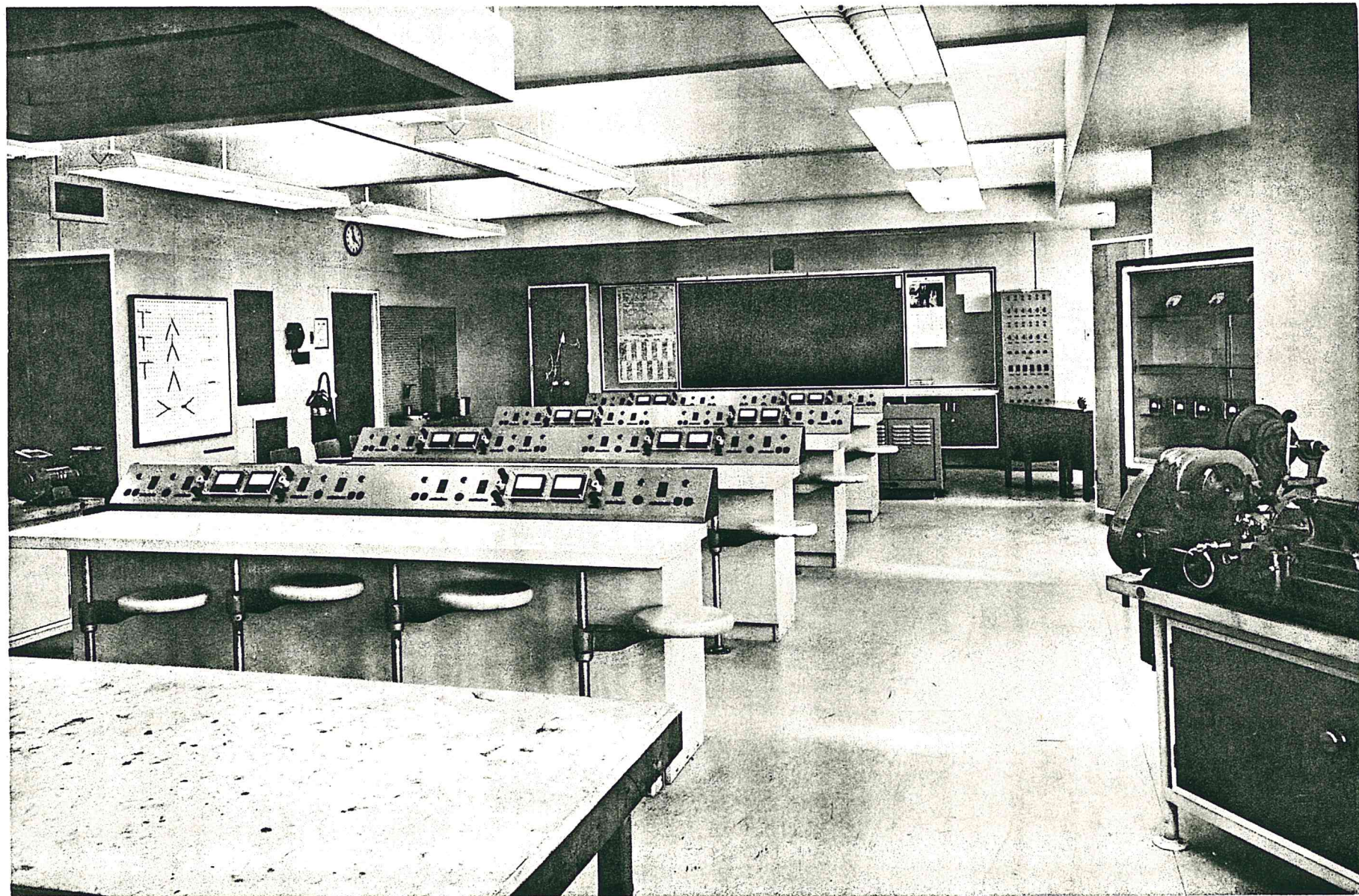


ROOF PLAN





LIBRARY



ELECTRICAL SHOP

MOTOR MAINTENANCE
SHOP

