

George Harvey Vocational School, Toronto, Ontario

*Architects and Engineers, John B. Parkin Associates*

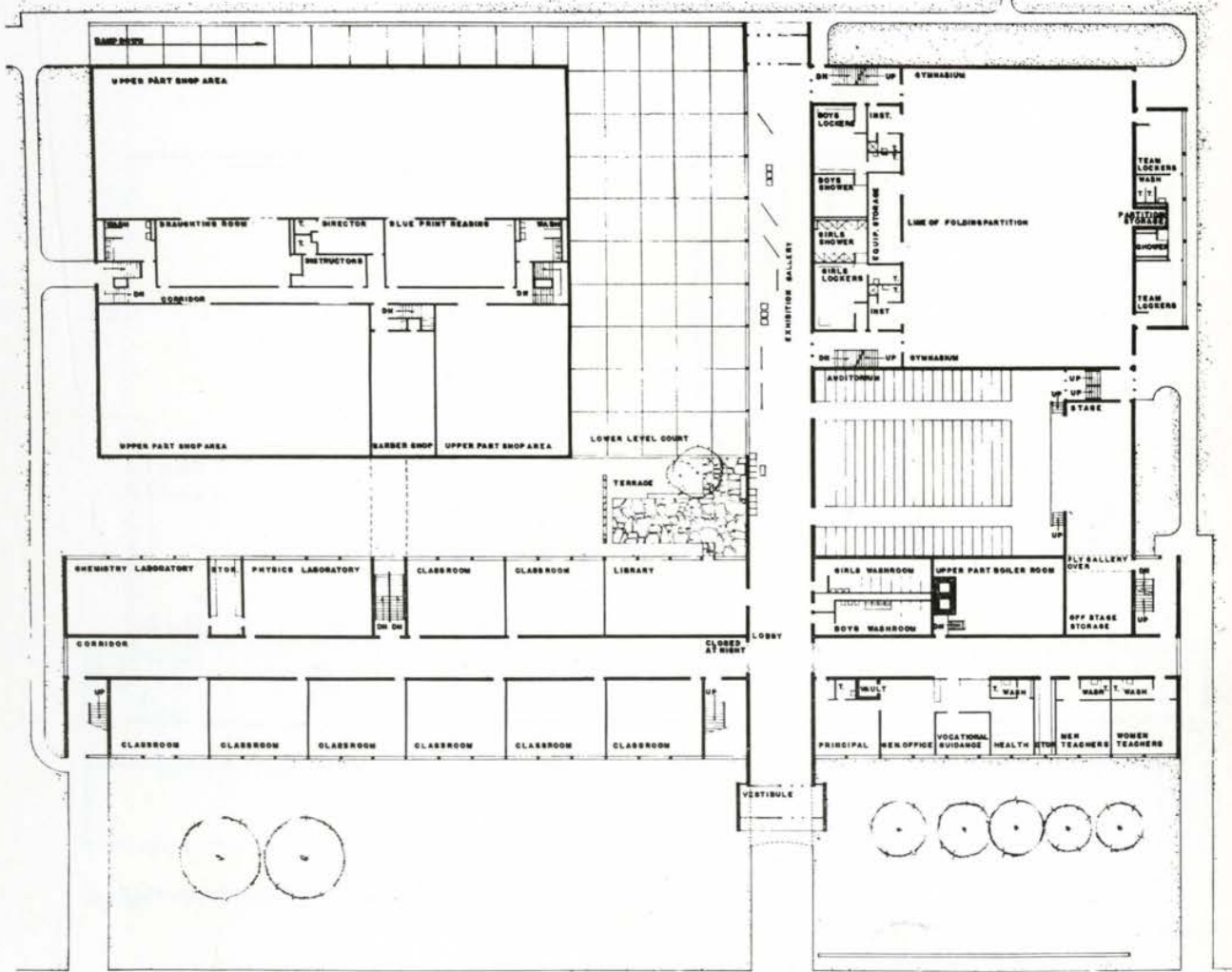
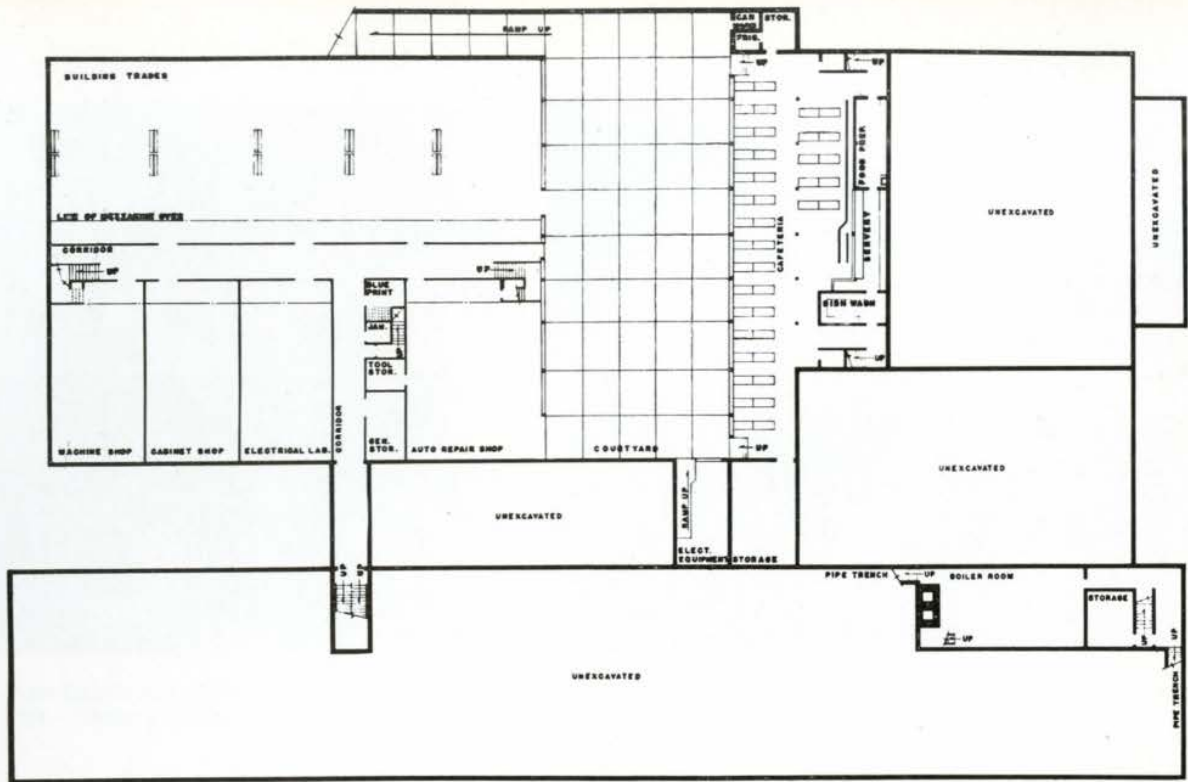
*General Contractors, Bennett-Pratt Ltd.*



Aerial view from south east with fifteen-year old Hydro Administration Building in lower left corner and our York Township Hydro Garage and Service Stores Building in upper right corner, which is to expand east and west. Playground at centre left behind workshops with sawtooth roofing and end of gymnasium-auditorium block. Main entrance from Keele Street. Shops to expand southerly behind old Hydro building 100%, i.e., 30,000 sq. ft.

View of lower interior court looking east toward classroom block with exhibition gallery over cafeteria on the left, and shops area over auto repair shop and building trades area on the right. Upper terrace at classroom end is accessible from library and contains benches.





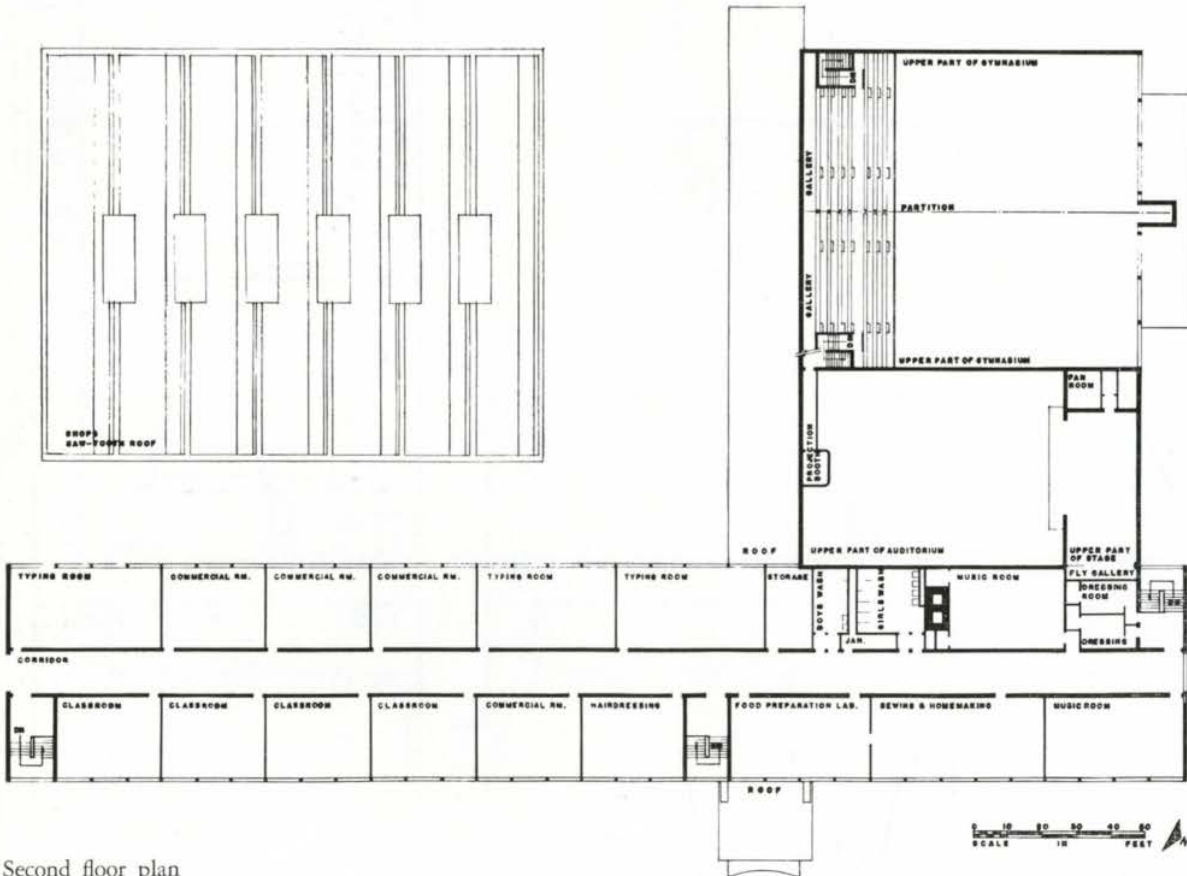
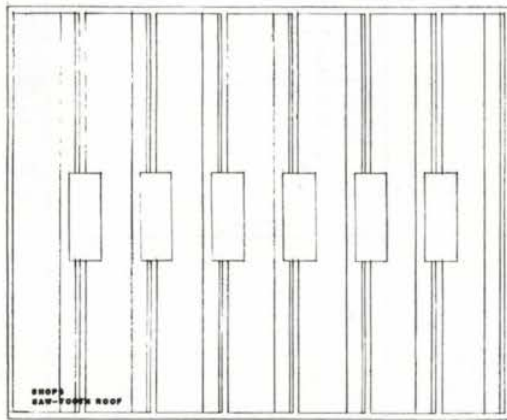


View looking down into east half of shops area from gallery over administration and draughting centre core area.



PANDA

Physics laboratory looking south, with storage room common to chemistry laboratory beyond — seen near door to corridor.



Second floor plan

Interior of double gymnasium from gallery, showing dividing partition moving into position. Note welded steel columns and beams with precast concrete slabs roofing. Walls of natural buff brick.



View of auditorium looking toward stage. Auditorium seats five hundred. Walls brick and painted steel, with natural walnut plywood on either side of stage; ceiling and projection box, plaster and rubber on aisle floors.

Night view of main entrance, looking down exhibition gallery, off which to the right are doors to auditorium and double gymnasium.

